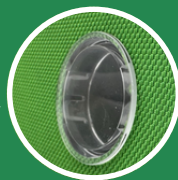




# ACCESSORIES CATALOGUE

Protection and support for AIVIA cabinets

Movable window to view  
the defibrillator status  
indicator



Customisable space



Coupling option  
AIVIA GO / AIVIA



## MALLETINGO

La malletINGO a été conçue pour  
protéger le DAE et pour réunir des  
accessoires de premier secours.



Compatible with  
AIVIA IN and AIVIA  
200

Weight: 0.8 kg

Colour: 3FA435

Dimensions: 265mm x 314mm x 140mm

Custom-made  
space for the AED



Space for a first aid kit



Space for  
AIVIA GO



Customisable space



# METAL WALL PROTECTION

- Dimensions: 550.25 x 550.25 x 490
- Weight: 6 kg
- Colour: RAL 6024

The metal wall protection protects the AIVIA cabinet from the sun and the greenhouse effect.





## METAL SUPPORT

- Dimensions: 274 x 270 x 155
- Made of Ø6 Mat.
- Stainless steel 304L Raw

The metal bracket has been designed specifically for the INGO cases and allows for a proper installation in accordance with the standards for vehicle mounting.

**Standard EN 1789:2007+A2:2014**

# AIVIA GO PROTECTION

The protective shell protects the AIVIA GO from shocks.





## THE SUPPORTS BORNAVIE AND COLAVIE

Designed for indoor or outdoor positioning of AIVIAS, the BORNAVIE and COLAVIE supports comply with the regulations in force for street furniture.

### BORNAVIE

- Aluminium AG3 5754H111 20/10th with a 80/10th base.
- H : 164 cm - W : 40 cm - D : 22 cm
- Weight: 13kg



## COLAVIE

Aluminium AG3 5754H111 20/10th  
Aluminium tube frame with round and square  
sections with a 80/10th base and 50 and  
30/10th reinforcements

- H : 242 cm - W : 82 cm - D : 26 cm
- Weight : 46kg